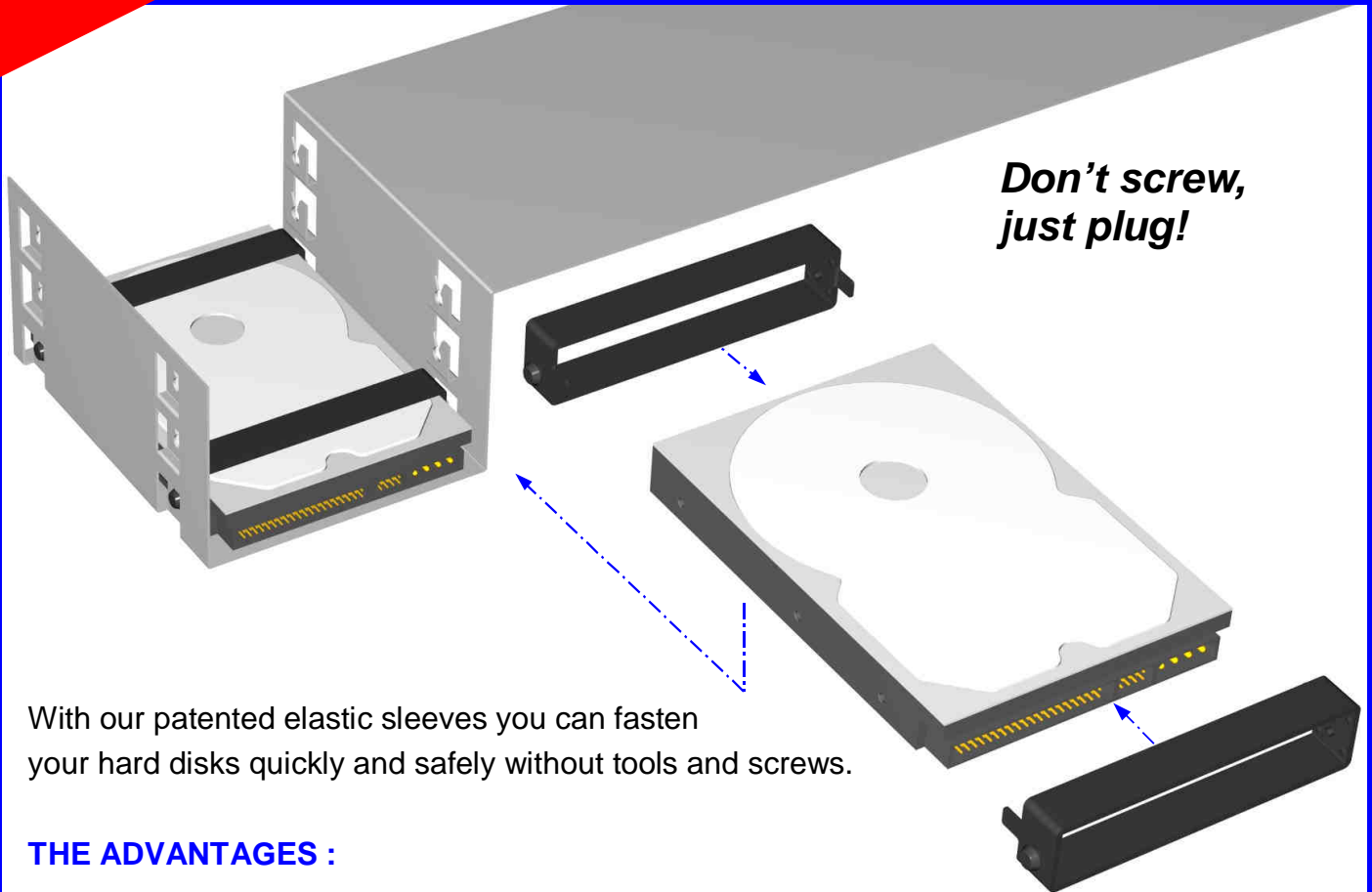


THE **INNOVATIVE** HARD DISK-FASTENING



With our patented elastic sleeves you can fasten your hard disks quickly and safely without tools and screws.

THE ADVANTAGES :

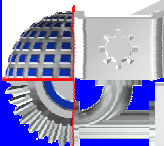
- Eliminates transmission of vibrations from the hard disk to the housing and reduces the noise.
- Fast, simple and safe screwless mounting and dismounting of hard disks.
- Lower mounting costs due to shorter assembly times and non-use of screws.
- Protects the hard disk against vibrations and thus increases its life time.

Mounting latch for pulling the sleeve over the hard disk.



The sleeves are made of elastic antivibration material (TPE) with fire protection classification UL94-V-0 and are RoHS/REACH complied.

The HD-sleeves are available for 2,5" and 3,5" hard disks.



THOPTEC
ENTWICKLUNGS &
VERTRIEBS GMBH

More information and technical details are available at :

Elkofener Weg 22 / RG
85567 Grafing-Schammach

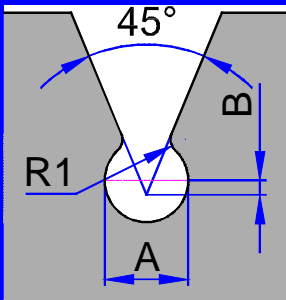
Fon +49 (0) 8092-2320-518
Fax +49 (0) 8092-2320-524

Info@thoptec.de
www.thoptec.de



Material - Mounting

Material:	TPE (Thermoplastic elastomer) RoHS and REACH complied
Hardness:	ca. 65° Shore A
Colour:	black
Fire resistance:	UL94-V-0
Temperature resistance:	from - 40 to +100 °C



Mounting:

To mount hard disks with our sleeves the housing or mounting frame has to be manufactured accordingly (see drawing on the left).

Two sleeves are required for the mounting of one hard disk.

Both sleeves are pulled over the hard disk until the two inner pins are placed into the side openings of the hard drive. Then the pegs of the sleeves are pushed into the cone-shaped hole of the housing or the mounting frame until they engage.

Note! By varying the length of radius R1 and amplitude B the force necessary to mount and dismount the hard disk plus sleeves can be adjusted

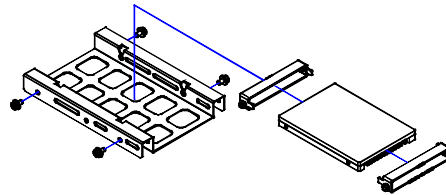
Hard-disk mounting frame sets



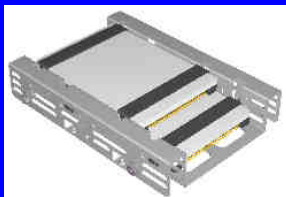
3,5" HD-mounting frame set

for one 2,5" hard-disk
including:

- 3,5" Mounting frame
- 2 x HD-Sleeve
- 4 x Screws UNC 6-32 (without hard disk)



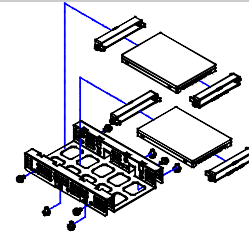
With the mounting frame set you can mount 2,5" or 3,5" hard disks vibration-reduced in standard 3,5" or 5,25" slots.



3,5" HD-mounting frame set

for two 2,5" hard-disk's
including:

- 3,5" Mounting frame
- 4 x HD-Sleeve
- 4 x Screws UNC 6-32 (without hard disk)



Frame material :

zincd steel sheet (Zinkor)

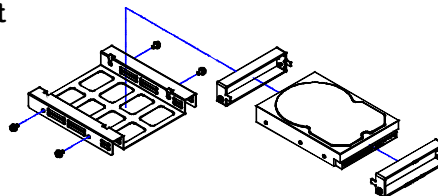
To connect an IDE 2,5" hard disk you need a customary adapter.



5,25" HD-mounting frame set

for one 3,5" hard-disk
including:

- 5,25" Mounting frame
- 2 x HD-Sleeves
- 4 x Screws UNC 6-32 (without hard disk)



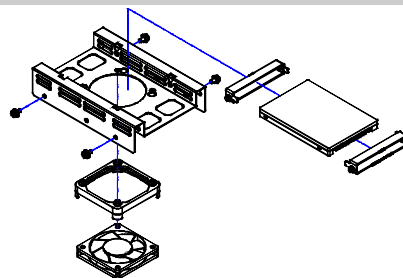
Hard-disk mounting frame sets with fan



3,5" HD-mounting frame set

with fan, for one 2,5" hard-disk
including:

- 3,5" Mounting frame
- 2 x HD-Sleeves
- 1 x Fan sleeve
- 1 x DC12V Fan 60x10
- 4 x Screws UNC 6-32 (without hard disk)



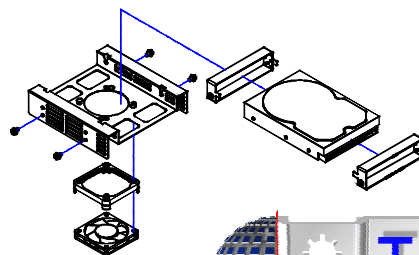
With the mounting frame set you can mount 2,5" or 3,5" hard disks vibration eliminated in standard 3,5" or 5,25" slots. In addition, the hard disks are cooled with the vibration-reduced mounted blower.



5,25" HD-mounting frame set

with fan, for one 3,5" hard-disk
including:

- 5,25" Mounting frame
- 2 x HD-Sleeves
- 1 x Fan sleeve
- 1 x DC12V Fan 60x10
- 4 x Screws UNC 6-32 (without hard disk)



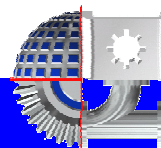
Frame material :

zincd steel sheet (Zinkor)

Info@thoptec.de
www.thoptec.de

Elkofener Weg 22 / RG
85567 Grafing-Schammach

Fon +49 (0) 8092-2320-518
Fax +49 (0) 8092-2320-524



THOPTEC
ENTWICKLUNGS &
VERTRIEBS GMBH