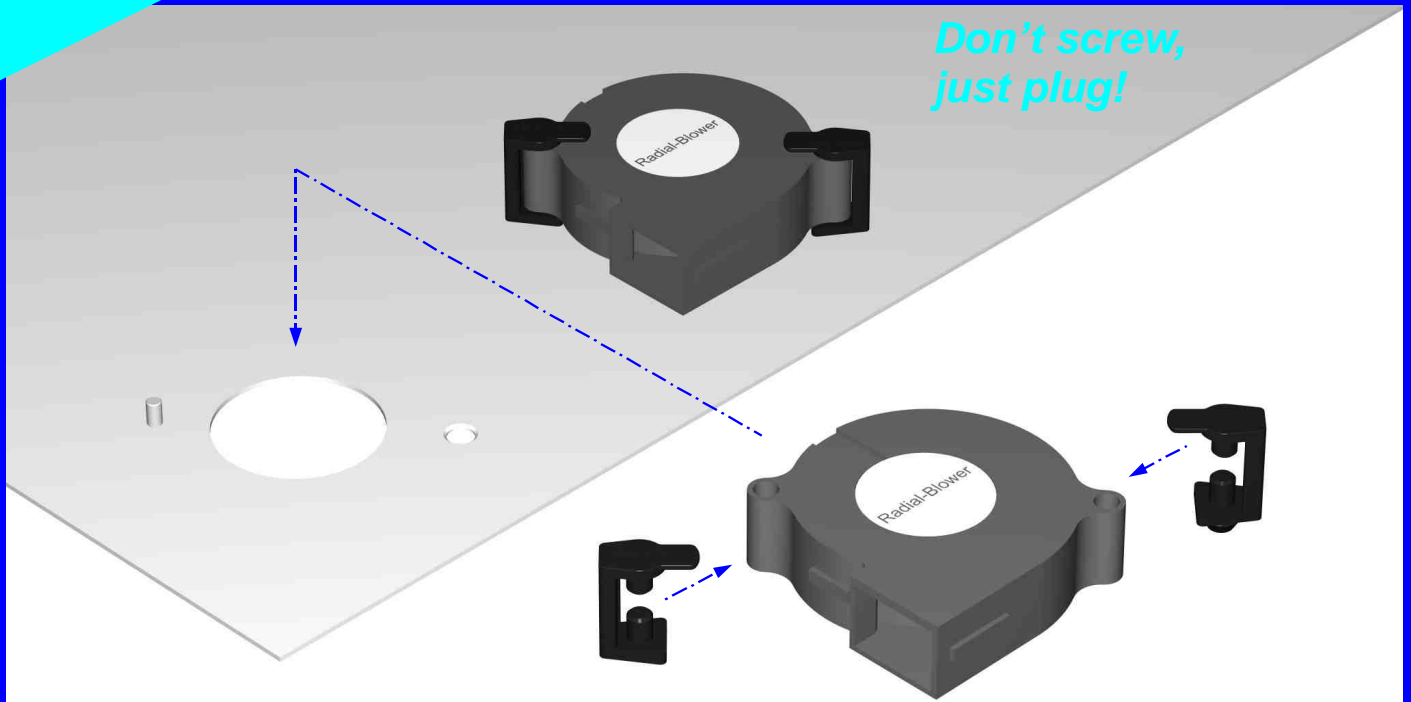


THE OPTIMAL RADIAL BLOWER FASTENER

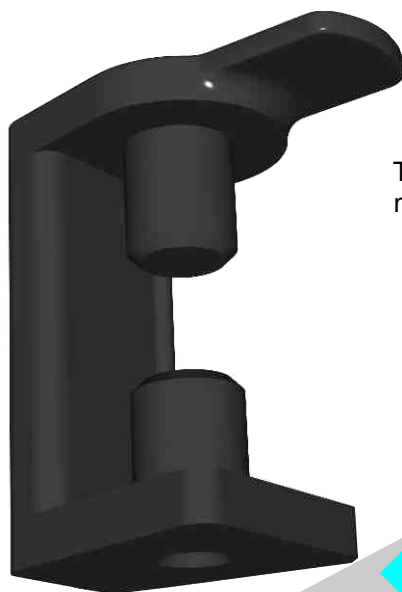
*Don't screw,
just plug!*



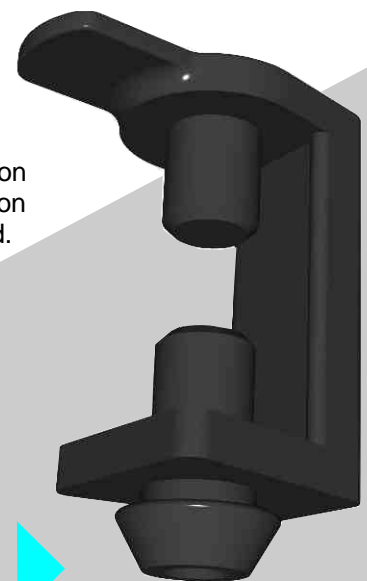
With our elastic fasteners you can mount your radial blower quickly and safely without tools and screws.

YOUR ADVANTAGES:

- Eliminates transmission of vibrations from the blower to the housing and reduces the noise.
- Fast, simple, safe, tool - and screwless mounting and dismantling of radial blowers.
- Lower mounting costs due to shorter assembly times and non-use of screws.
- Protects the radial blower against vibrations and thus increases its life time.



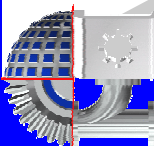
Mounting flap for pulling
the pivots into the drill hole
of the blower.



The fasteners are made of elastic anti-vibration
material (TPE) with fire protection classification
UL94-V-0 and are RoHS / REACH complied.

Type RLBB with drill-hole or Type RLBS
with plug-in peg for fixing on the
mounting plate or housing wall.

**The fasteners are available in different distance dimensions
and are applicable with all standardized radial blowers
from different manufacturers.**



THOPTEC
ENTWICKLUNGS &
VERTRIEBS GMBH

Elkofener Weg 22 / RG
85567 Grafing-Schammach

Fon +49 (0) 8092-2320-518
Fax +49 (0) 8092-2320-524

Info@thoptec.de
www.thoptec.de

Types - Material - Mounting - Accessories

Available are two different types of fasteners for radial blowers with different distance dimensions.

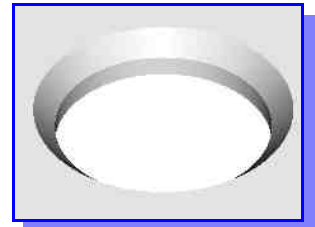
To fasten the radial blower two fasteners are needed. First the fasteners are fixed to the blower by putting the lower pivot of the fastener into the drill hole of the radial blower, then pull the fastener's mounting flap until the upper pivot engages in the opposing drill hole of the blower.

Type RLBS with plug-in peg



Mounting:

Type RLBS fasteners with plug-in peg can be put through a slightly chamfered hole in the mounting plate.



or through the larger hole of an 8-shaped perforation and then pushed into the smaller hole.



Type RLBB with drill-hole



Mounting:

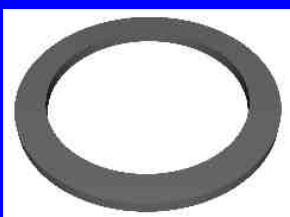
Type RLBB fasteners with drill-hole you just put on a 3.0 mm pin with or without threads which is pressed into the mounting plate.



Material & Properties

Material:	TPE (Thermoplastic Elastomer)
Hardness:	RoHS and REACH complied ca. 65° Shore A
Colour:	black
Fire resistance:	UL94-V-0
Temperature resistance:	from - 40 to + 100 °C

Accessories

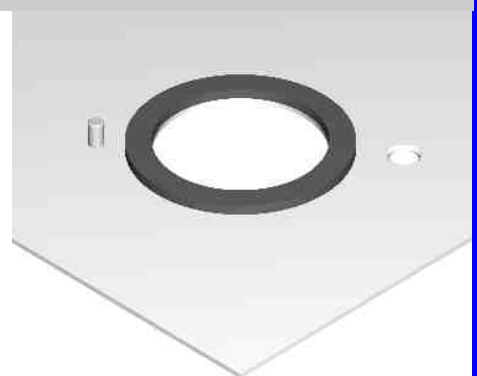


Seal ring

The one-sided self-adhesive seal rings can be adhered to the mounting plate or the radial blower to insulate the suction and compression chamber.

Seal rings are available in different diameters and material thickness.

Material: cellular rubber (EPDM 15)
one-sided self-adhesive

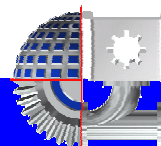


More information and technical details are available at :

Info@thoptec.de
www.thoptec.de

Elkofener Weg 22 / RG
85567 Grafing-Schammach

Fon +49 (0) 8092-2320-518
Fax +49 (0) 8092-2320-524



THOPTEC
ENTWICKLUNGS &
VERTRIEBS GMBH